

The benefits



1 Save time and money

2 Pays off after 4 hours usage*

3 Comfort and accuracy

*Estimation in comparison to folding in copy shops

Automatic Desktop Folder Martin Yale 7200

The automatic desktop folder Martin Yale 7200 feeds and folds the paper automatically: fast, comfortable and accurate. Simply select one of the four fold types, insert paper and press the 'on' button. The perfectly folded documents will be collected neatly in the stacking tray provided.

The well-priced desktop folding machine Martin Yale 7200 is recommended for a medium size quantity of outgoing mail and occasional mailing activities from small to medium size print runs.

Areas of application

- Home offices
- Copy shops
- Wholesale, automobile dealers
- Local governments
- Hotels and restaurants
- Small offices and businesses, chambers etc.
- Associations, institutions such as local unions and churches

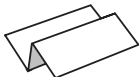
Folding post formats effectively...



① Letter fold

② Z-fold

- correspondence
- invoices
- offers
- price lists
- flyers/brochures



③ Half fold

- tabletop displays
- invitation cards
- price lists
- flyers/brochures
- greetings cards, menus

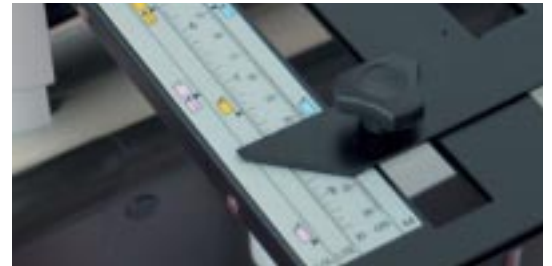


④ Double fold

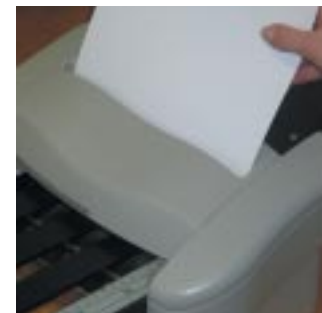
- invitation cards
- flyers/brochures



No fanning needed.



Clear instructions for adjusting the fold types.



Manual paper feed - up to 3 sheets simultaneously.



Automatic Desktop-Folder Martin Yale 7200

Special features

- No fanning needed
- Perfect output in stacking tray provided
- Little space required
- Low sound level

Important performance data

| | |
|--------------------|---|
| Fold types | 4 / letter fold, z-fold, half fold and double fold |
| Capacity | 4,000 sheets / hour |
| Standard format | DIN A4, A5 |
| Special paper size | 120 x 180 mm to 216 x 360 mm |
| Paper weight | 60 - 105 g/m ² |
| Manual feeding | Up to 3 sheets simultaneously (with or without staples) |
| Feeding | Automatic |

Other technical data

| | |
|----------------------|--------------------------------------|
| Feed table capacity | Up to 50 sheets |
| Dimensions W x D x H | 34 x 52 x 27 cm (operating position) |
| Weight | 7 kg |

Issue 01/2006

Product Range Folder

Issue 1/2006



Quality Office and Graphics Products



Model Martin Yale

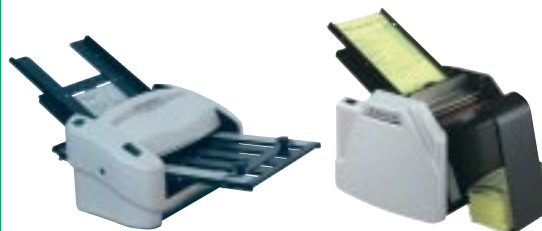
Manual Desktop- Folder



6200

6400

Automatic Desktop- Folder



7200

7400

1501X

Automatic Office- Folder



1601

1701

Automatic Professional- Folder



1217A

Performance characteristics

| | | 6200 | 6400 | 7200 | 7400 | 1501X | 1601 | 1701 | 1217A |
|----------------------|--------------------|---------|---------|--------------------------|--------------------------|--------------------------|-------------------------|-------------------------|-------------------------|
| Folding types | numbers | 1/ ① | 2/ ①③ | 4/ ①②③④ | 4/ ①②③④ | 5/ ①②③④⑤ | 5/ ①②③④⑤ | 5/ ①②③④⑤ | 7/ ①②③④⑤⑥⑦ |
| Capacity | sheets / hr | 1,800 | 2,200 | 4,000 | 4,000 | 8,000 | 9,000 | 9,000 | 10,300 |
| Standard formats | DIN | A4 | A4 | A5, A4 | A5, A4 | A5, A4 | A5, A4 | A5, A4 | A5, A4, A3 |
| Special paper sizes | mm up to mm | | | 120 x 180 - 216 x 300 | 120 x 180 - 216 x 360 | 100 x 204 - 216 x 340 | 89 x 280 - 216 x 280 | 89 x 280 - 216 x 280 | 95 x 150 - 300 x 435 |
| Paper weight | g / m ² | 60 - 90 | 60 - 90 | 60 - 105 | 60 - 105 | 60 - 90 | 60 - 105 | 60 - 105 | 60 - 240 |
| Manual paper feed | up to sheets | 3 | 3 | 3 | 3 | 3 | 5 | 5 | – |
| Automatic paper feed | | – | – | X | X | X | X | X | X |

Special characteristics

| | | | | | | | | | |
|---|--|---|---|---|---|---|---|---|---|
| Electronic fold adjustment by touch pad | | – | – | – | – | – | – | X | – |
| Automatic jam detect and auto shut off | | – | – | – | X | – | X | X | – |
| No fanning needed | | – | – | X | X | – | X | X | – |
| Conveyer | | – | – | – | – | – | X | X | X |
| Stacking tray | | – | – | X | X | X | – | – | – |

Tech. Data

| | | | | | | | | | |
|-----------------------------------|----------------|--------------|--------------|--------------|--------------|--------------|--------------|--------------|---------------|
| Feed table capacity | up to sheets | – | – | 50 | 50 | 200 | 150 | 150 | 250 |
| Dimensiones in operating position | W x D x H / cm | 31 x 14 x 15 | 36 x 17 x 17 | 34 x 52 x 27 | 34 x 55 x 27 | 40 x 55 x 43 | 40 x 70 x 40 | 40 x 78 x 40 | 43 x 100 x 45 |
| Weight | approx. kg | 5 | 4 | 7 | 7 | 15 | 17 | 18 | 24 |
| Pay back time | in h | 4 | 4 | 4 | 5 | 7.5 | 7.5 | 17 | 14 |