

# TRANSFORMING MAIL CENTRE OPERATIONS

Simple. Flexible. Smart.



Insert logo here

## iX-5 Series

The iX-5 offers flexibility and efficiency while maintaining job integrity every step of the way. Ideal for mid-level mail volumes, the iX-5 is available in two models, a power-assisted hand feed (iX-5 HF) or with auto-feed technology (iX-5 AF). The iX-5 boasts a modern design with a color screen and easy-to-use control panel.

When powered by S.M.A.R.T.® software, the iX-5 transforms into your powerful partner, creating a consolidated and organised epicentre that streamlines workflows and reduces equipment footprint. S.M.A.R.T. combines essential mail centre operations into a powerful, user-friendly, all-in-one solution.



**EXPERIENCE**  
A rich history of  
world-class leadership



**PROVEN RESULTS**  
96% customer  
satisfaction rate



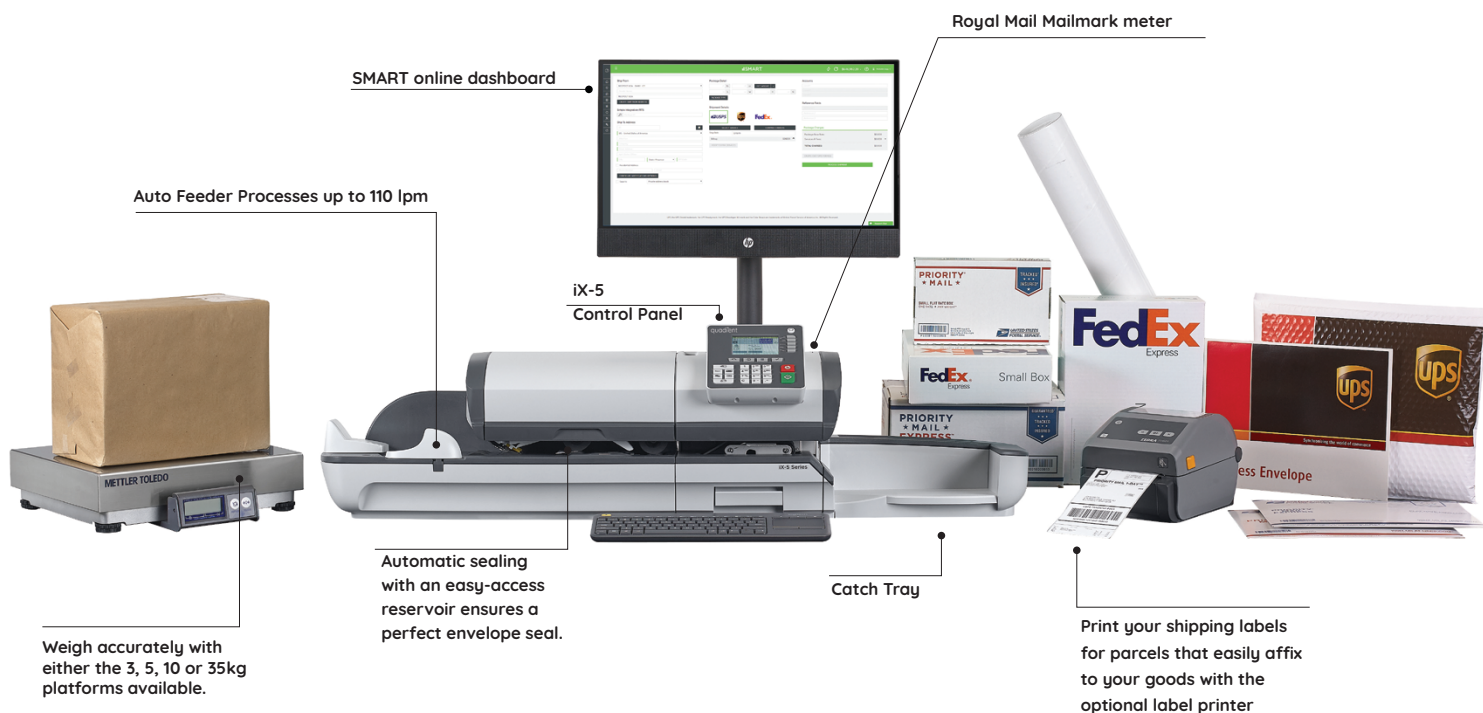
**EXPERTISE**  
8 billion personalised  
experiences annually



**BACKED BY THE EXPERTS**  
Gartner, Forrester,  
and Aspire

# Revolutionise Mail Centre Management with S.M.A.R.T.

S.M.A.R.T. provides the ultimate Shipping, Mailing, Accounting, Reporting and Tracking experience – all from a single dashboard! This solution combines leading edge technologies to improve customer interactions and business processes. A consistent look and feel across each element provides familiarity to users, making navigation simple and intuitive. S.M.A.R.T. fuels stronger business communications with your internal and external customers by providing detailed shipping and tracking notifications, chargeback accounting with postage meter reconciliation, and extensive reporting options to name a few.



## SHIPPING

This best-in-class powerhouse shipping application allows you to process parcels through Royal Mail quickly and easily. All parcels also receive a free confirmation of delivery from Royal Mail.

With S.M.A.R.T. you can:

- View rates and services from one screen. S.M.A.R.T. will automatically **rate shop** to identify the lowest cost or fastest delivery method of processing parcels, saving time and money.
- Assign printing permissions to users outside of the mail centre with **Desktop Print**. Desktop printing provides flexibility within an organisation while decreasing mail centre workload.
- Establish potential cost saving opportunities, decrease the number of work steps to process items, and better organise shipments when using **multi-package shipments**.



## MAILING



Take full control of your iX-5 and create an unparalleled user experience. S.M.A.R.T. takes all the features from a traditional mailing system control panel and applies them to an all-in-one interactive PC.

- Print discounted postage and seal envelopes at **up to 110 letters per minute**.
- Large descriptive buttons and prompts make navigation a breeze.
- The **Rate Wizard** simplifies the process of selecting the correct postal rate and class. With clear step-by-step instructions, the selection process has never been easier.

## ACCOUNTING



S.M.A.R.T. provides users the ability to set up specific accounts, allowing for greater level of reporting granularity.

- Postal account reporting tracks spending, providing the tools you need to stay on top of expenses.
- **Chargeback accounting** lets you bill vendors, customers or departments for mailing/shipping costs and allows you to recoup postage costs that would otherwise slip through the cracks.
- Supports: **Budgets, handling charges** and **surcharges**, as well as an **unlimited** number of **accounts** or **departments**.

## REPORTING



Easily produce informative reports and colour graphs that give you the details you need.

- Generate postage expense reports by: mail class, weight break, presort, ascending and descending register values, account/department, operator, cost centre, pre-defined or custom time periods – and more!
- Set it and forget it – S.M.A.R.T.'s **report scheduler** automatically runs and emails reports to a designated recipient or group based upon user-defined parameters

## TRACKING



Always know when and where your items are with S.M.A.R.T. Tracking.

- Free confirmation of delivery on all parcels at no extra cost. All tracked services ID's are stored for up to **13 months**.
- Keep your customers informed by providing delivery **email alerts** each step of the way.
- Obtain **consolidated views** of your mail centre's activities to better manage mailing and shipping operations.



## SPECIFICATIONS

Mailmark meter	Standard
Processing speed iX-5 HF	Up to 75 lpm
Processing speed iX-5 AF	Up to 110 lpm
Accounts/departments	100 standard
Envelope minimum	89 x 127 mm
Envelope maximum	229 x 324 mm
Envelope thickness	Up to 12 mm
Envelope orientation	Landscape or portrait
Connectivity	LAN standard
Rate shortcut keys	6
Job imprint memories	9
Incoming date stamp	Standard
Postage meter tapes	Yes, integrated automatic label dispenser
4-digit PIN code	Standard
Low-ink email alerts	Standard

## OPTIONS

Differential weighing	Available
External weighing platform	Available in 3, 5, 10 and 35kg.
Accounts/departments upgrade	300, 500 or unlimited with S.M.A.R.T.
Wireless Barcode scanner	Available
WiFi Adapter	Available
S.M.A.R.T. Essential Software	Available
Additional Desktop RTS/ Print licenses	Available

## SYSTEM DIMENSIONS

iX-5 HF with envelope tray	838 x 381 x 305 mm
iX-5 AF with envelope tray	1195 x 381 x 305 mm

## S.M.A.R.T REQUIREMENTS

PC required - not supported on Mac
Operating system: Microsoft Windows 10 Professional and Enterprise - 32/64 bit (desktop)
Browsers: Microsoft Internet Explorer (IE11), Microsoft Edge, Mozilla Firefox, or Google Chrome
Device Manager
Windows recognised inkjet, laserjet or thermal label printer with a minimum quality of 203 dpi (Royal Mail requirement)
Quadiant Postage Funding

Guided by Quadiant's Sustainable Design and Responsible Manufacturing Policy, our products may contain reused components. For more Information, visit [www.quadiant.com/about-us/sustainable-design-and-manufacturing](http://www.quadiant.com/about-us/sustainable-design-and-manufacturing).



## About Quadiant®

Quadiant is the driving force behind the world's most meaningful customer experiences. By focusing on three key solution areas including Intelligent Communication Automation, Parcel Locker Solutions and Mail-Related Solutions, Quadiant helps simplify the connection between people and what matters. Quadiant supports hundreds of thousands of customers worldwide in their quest to create relevant, personalised connections and achieve customer experience excellence. Quadiant is listed in compartment B of Euronext Paris (QDT) and is part of the CAC® Mid & Small and EnterNext® Tech 40 indices.

For more information about Quadiant, visit [www.quadiant.com](http://www.quadiant.com)